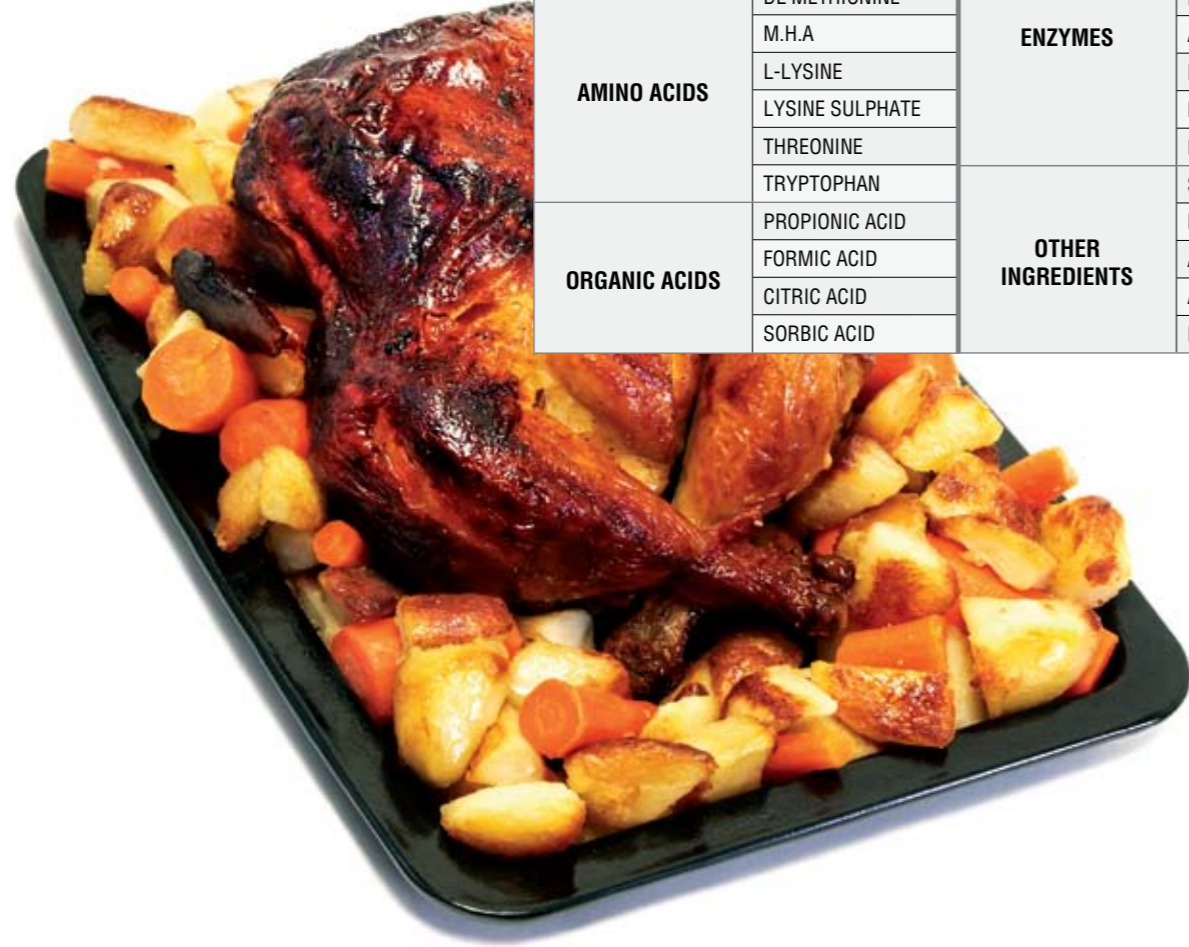


#### ADVANTAGES IN TERMS OF COSTS

- >> It is cheaper than the standard feed.
- >> Its content structure minimizes feed consumption.
- >> Provides the opportunity to choose the cheapest main feed ingredient.
- >> Dealing with only one feed additive substantially reduces costs.



#### BAKON® BROILER FEED COMPLEX PREMIX CONTENT

VITAMINS		MINERALS	
VITAMIN A		CALCIUM	
VITAMIN D3		PHOSPHORUS	
VITAMIN E		SODIUM	
VITAMIN K3		MANGANESE	
VITAMIN B1		IRON	
VITAMIN B2		ZINC	
VITAMIN B6		COPPER	
VITAMIN B12		IODINE	
NIACIN		COBALT	
CALPAN ACID		SELENIUM	
FOLIC ACID		MAGNESIUM	
D-BIOTIN		MOLIBDENIUM	
CHOLINE CHLORIDE		CHROMIUM	
VITAMIN C		XYLANASE	
AMINO ACIDS		ENZYMES	
DL METHIONINE		CELLULASE	
M.H.A		PHYTASE	
L-LYSINE		A.AMYLASE	
LYSINE SULPHATE		PECTINASE	
THREONINE		B-GLUCANASE	
TRYPTOPHAN		LIPASE	
ORGANIC ACIDS		OTHER INGREDIENTS	
PROPIONIC ACID		SACC. CEREVISIAE	
FORMIC ACID		HSCAS	
CITRIC ACID		ANTIOXIDANTS	
SORBIC ACID		ANTICOCIDIALS	
		PROTEIN SOURCES	

# “ALL IN ONE”

## BAKON® FEED COMPLEX PREMIX



#### DSA AGRIFOOD PRODUCTS CO.

Head Office: Cinnah Caddesi, Kuloğlu Sokak,  
No: 15/4 Çankaya • Ankara • Türkiye  
Phone: +90 312 440 81 51 • Fax: +90 312 440 85 86  
Factory: Kırkkale Organize Sanayi Kırkkale • Türkiye  
[www.dsakimya.com.tr](http://www.dsakimya.com.tr) • [info@dsakimya.com.tr](mailto:info@dsakimya.com.tr)



### BROILER GROUP



# ALL IN ONE

## BROILER FEED WITH BAKON® CEREAL (corn, wheat, etc.) + MEAL (soybean) + OIL + BAKON®

The most important objective of the broiler industry is to obtain high quality carcass from healthy pullets. The best way to achieve this, is by using good quality feed with right additives in the production. Bakon Feed Additives are premixes prepared in light of cutting edge developments in feed production technology. These special mixtures, developed by our company's long-term R&D work, is registered with the name of "BAKON®". "BAKON® BROILER FEED COMPLEX PREMIX", prepared with special formulation for healthy flocks and high quality carcass, optimizes the feed to include all additives at ideal levels required by nutritive and healthy feed.

### OUR FREE OF CHARGE SERVICES PROVIDED TO ALL PRODUCERS USING BAKON®

Given our emphasis on customer satisfaction, we provide the following services free of charge to all BAKON users:

- >> Monitoring the poultry house; application of ration ranges according to animal ages, health checks, diagnosing and treating animals with problems;
- >> Control and arrangement of feeding, lighting programs, water systems, examination of equipment;
- >> Control and analysis of feeds and feed ingredients;
- >> Blood analysis;
- >> Vaccination programs and follow-up;
- >> General monitoring over feed manufacturing site.

By using BAKON®, your firm protects itself from any problems that may occur in feeding and health issues. Possible health problems are minimized through ensuring a well-balanced diet for your flocks. Solutions to potential problems are offered in the shortest time possible with the most effective methods.

**DOSAGE:** 25 kg per 1 ton feed



### GENERAL BENEFITS

- >> It is a perfect premix; simplifies the feed preparation.
- >> Enriches the feed content and provides a healthy and well-balanced diet, specially formulized for breed and each age range;
- >> Eliminates dependence on amino acids and includes all enzymes;
- >> No need to use additional preservatives, as it includes all at perfect levels;
- >> All feed ingredients in premixes are original and pure;
- >> Provides freedom in choosing the meal and cereal type and needs only one type of cereal.
- >> Provides specific options for broilers with problems;
- >> It standardizes the feed and provides continuous efficiency.
- >> Ensures feed hygiene with qualified preservatives.

### TYPE OF BAKON® BROILER FEED COMPLEX PREMIXES

#### 1- BAKON Broiler Chick Starter Feed Complex Premixes

Used between 0-10 days

#### 2- BAKON Broiler Grower Feed Complex Premixes

Used between 10-38 days

#### 3- BAKON Broiler Chicken Finisher Feed Complex Premixes

Used between 38th day and slaughtering.

### FEED INGREDIENTS

- >> Regional Cereals; corn, wheat
- >> Oilseed meals; soybean
- >> Oil
- >> Limestone-salt
- >> Along with above, using BAKON® BROILER FEED COMPLEX PREMIX will be sufficient for obtaining desired results.



### CONTRIBUTION TO PERFORMANCE

- Increased daily live weight;
- Drier litter;
- Less feed consumption;
- Lower mortality rate;
- Higher immunity against diseases for flocks;
- Healthier skin color and improved shelf life
- Lower FCR

